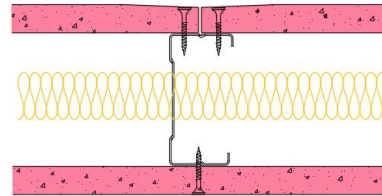


70-B-56(25) - SPEEDLINE System Data Sheet - Version V1 (24-10-23)

SPEEDLINE 70mm 'C' Stud Partition @600mm Ctrs,
with BG Gyproc 15mm FireLine each side, 25mm
APR



System Performance Breakdown

Fire Resistance:

BS476 Part 22:1987:

Test Ref & Date or Applied Ref & Report:

Max Height:

Thickness:

Duty Grade: BS 5234: Part 2:1992:

Sound Insulation:

60/60 Minutes (Integrity/Insulation).

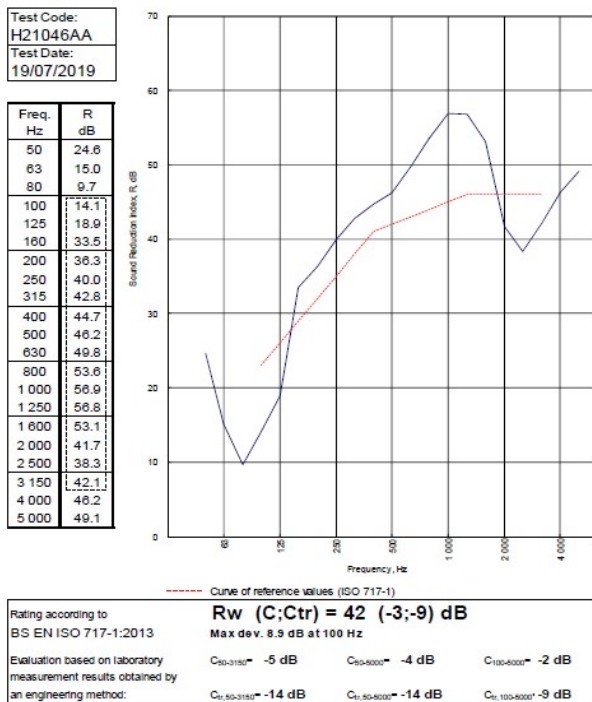
BTC 17441F - BRE Report P102396-1011A

Refer to Speedline Specification Clause

102 mm. (At Base Track, Excluding Finishes)

Heavy - Annexes A-F

42 R_w dB, Date Tested or Assessed Against - 19/07/2019



TESTED AT ONE OF THE UKAS ACCREDITED LABORATORIES BELOW

B.T.C
(H-Ref on Graph)

B.R.E

AIRO

S.R.L

Customer: Voestalpine Metsec Plc Lining



BTC 21046A: Page 11 of 14

SPEEDLINE Drywall Systems, Adsetts House, 16 Europa View, Sheffield Business Park, Sheffield, S9 1XH.

Tel: 0114 231 8030.

Email: enquiries@speedlinedrywall.co.uk

(As per the requirements set out in ISO/IEC 17025:2017 regarding test data the results stated have been carried out by voestalpine Metsec plc as part of the contract to supply Speedline Metal Sections to SIG Plc)